



## KS1 Art and Design & Geography

### Terrains, weather, cycling model making

Identify key features of various terrains across the world

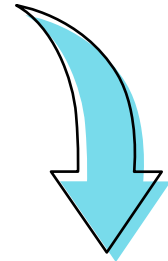
#### READY CURRICULUM LINKS & SESSION OUTCOMES

**Art & Design:** to use a range of materials creatively to design and make products.

**Geography:** Explore terrains and weather and implications for cycling

This learning resource supports pupils to:

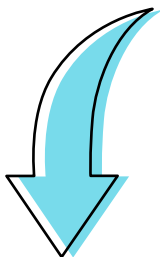
- Compare and contrast weather and terrains in different locations
- Plan and select appropriate materials to create a model of a selected environment.



#### SET WHAT YOU WILL NEED

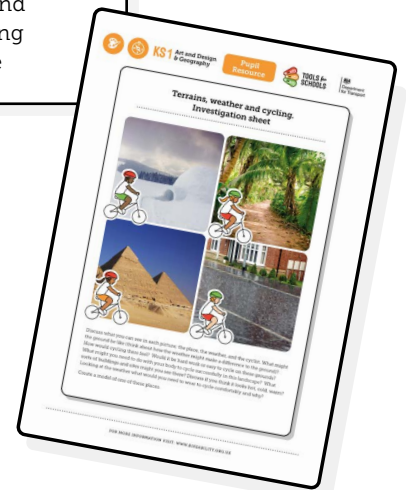
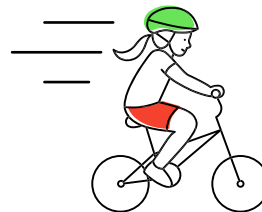
- **Terrains, weather and cycling. Investigation sheet** (1 per group)
- A variety of art resources suitable for creating terrains i.e. paper straws, pipe cleaners, card, modelling clay, lolly

sticks, glue, paper, playdough, sand, cotton wool, leaves, grasses, sugar cubes, white icing, cardboard boxes, pens/paints, string/twine, and tissue paper or anything suitable you may have



#### PEDAL WHAT TO DO

- Introduce the activity and share the **Terrains, weather and cycling. Investigation sheet**
- Enable pupils to share thoughts and feelings about the terrain and weather in the images
- Pupils select one location, plan and create a model



#### TO MAKE THIS LEARNING ACTIVE



Pupils can be encouraged to act out how it might look to cycle through the various landscapes, to support their discussion. Pupils could mime the actions and others can guess which landscape they are cycling through.

#### DID YOU KNOW?

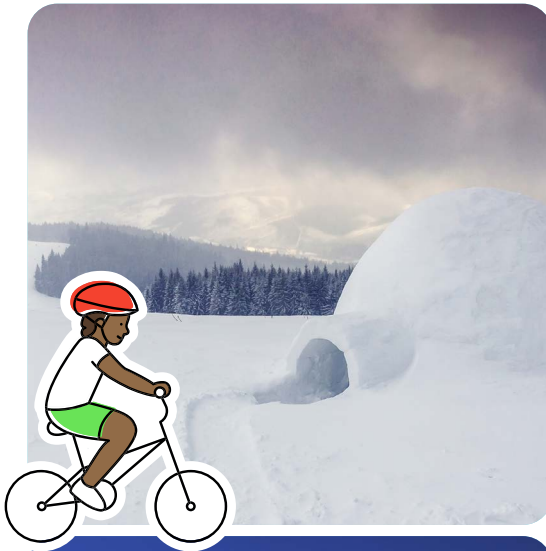


Tyres use rubber, usually from rubber plantations in burned down rain forests. Bicycle tyres are skinnier than car tyres, so don't need as much rubber, this can help to save the rain forests. Brilliant!



## Terrains, weather and cycling. Investigation sheet

---



Discuss what you can see in each picture; the place, the weather, and the cyclist. What might the ground be like (think about how the weather might make a difference to the ground)? How would cycling there feel? Would it be hard work or easy to cycle on these grounds? What might you need to do with your body to cycle successfully in this landscape? What sorts of buildings and sites might you see there? Discuss if you think it looks hot, cold, warm? Looking at the weather what would you need to wear to cycle comfortably and why?

Create a model of one of these places.



# Model making

## Creating a model igloo

**You'll need;**

- Sugar cubes
- White icing
- Cardboard base
- Small piece of card for roof of igloo

**Step 1** Draw a circle on your base card. Approx. 18 cm diameter.

**Step 2** Place a layer of sugar cubes around the circle. Use white icing on the bottom to stick them to the base. Space the cubes slightly so they are not touching. Leave a gap on one side for the entrance.

**Step 3** Create a second layer of cubes on top, using the icing to glue them to the first layer. Stagger the second layer, so they sit on top of gaps between the lower level cubes. Remember to leave the gap for the entrance.

**Step 4** Continue layering the cubes, icing them together until there is 5 layers. Add the 6th layer of sugar cubes, still offsetting the sugar cubes and also moving the cubes slightly towards the centre. This will start to create the dome shaped roof, icing the cubes in place. This time do not leave a gap. Use icing on the side of the cubes to cover this gap.

**Step 5** Repeat this three more times to create a 3 more layers of sugar cubes.

**Step 6** Cut a piece of cardboard the same size as the opening at the top and stick it over the gap with the icing, cover it with more icing to finish. Use cotton wool to create the snow around the igloo.

## Creating a pyramid model

**You'll need;**

- Cardboard
- Sand
- Glue
- Pens

**Step 1** Cut out a square base of card (35 cm) and 4 triangles each with a base of 20cms and outside edge of 30 cms tall.

**Step 2** Stick the 4 triangles together to form the pyramid and then stick to the square base.

Draw small lines on the pyramid to create stone shapes.

Cover the pyramid with light coat of glue and sprinkle with sand to provide a sandy texture. Alternatively you can make these from sand paper stuck to card.

## Creating a rain forest model

**You'll need;**

- A shoe box
- Tissue paper
- Card board
- Pens/paint
- String/twine
- Scissors
- Glue
- Leaves/moss (optional)

**Step 1** Remove the lid and stand the box on its short end. Remove the top side of the box, so the top is open.

**Step 2** Paint the inside of the box in rainforest colours or use fabrics or magazine images.

Create trees of different sizes using rolls of card, add rainforest characteristic, roots, branches, lots of leaves. Add lianas (a long-stemmed, woody vine that is rooted in the soil at ground level and uses trees, as well as other means of vertical support, to climb up to the canopy to get access to well-lit areas of the forest) and wind round the trees from the ground upwards using wool or string.

**Step 3** Use moss or leaves of green/brown tissue paper to create the rainforest base.

**Step 4** Add some rainforest animals too if you want - macaws, jaguars, snakes!

## Creating a rainy street scene model

**You'll need;**

- Cardboard base
- Cardboard boxes (different sizes)
- Any recycling materials
- Glue
- Pens/paints
- Foil

**Step 1** Plan and draw roads onto a cardboard base. Colour these in, create road markings too if you wish. Use foil to add puddle shapes to show rainy environment.

**Step 2** Create buildings from cardboard and boxes to place along the roads. Be creative with the kinds of buildings you may find. If recreating a real location, choose some recognisable landmarks to create.

**Step 3** Colour these in to share the town/city you have chosen.